

Product:

PSMA | FEATURES OF
INTEREST

Prepared:

May 2018



Data Product Description

Standard

This document is based on the AS/NZS ISO 19131:2008 Geographic information – Data product specifications standard. For more information, refer to www.saiglobal.com/online.

Disclaimer

PSMA Australia believes this publication to be correct at the time of printing and does not accept responsibility for any consequences arising from the use of information herein. Readers should rely on their own skill and judgement to apply information to particular issues.

This work is copyright. Apart from any use as permitted under the Copyright Act 1968, no part may be reproduced by any process without prior written permission of PSMA Australia Limited.

Contents

1. Overview	5
1.1 Data product specification title	5
1.2 Reference date.....	5
1.3 DPS responsible party	5
1.4 Language	5
1.5 Topic category.....	5
1.6 Distribution format.....	5
1.7 Glossary	5
1.8 Informal description of the data product.....	5
1.9 Copyright in Features of Interest dataset.....	6
1.10 Privacy	6
2. Specification Scope	7
2.1 Scope identification	7
3. Data Product Identification.....	8
3.1 Title.....	8
3.2 Alternate titles	8
3.3 Abstract.....	8
3.4 Purpose.....	8
3.5 Topic category.....	8
3.6 Geographic description	8
4. Data Content and Structure	10
4.1 Feature-based data.....	10
4.2 Feature-based application schema (data model)	10
4.3 Data dictionary	10
4.4 Feature-based content scope	10
5. Reference System	12
5.1 Spatial reference system	12
5.2 Temporal reference system	12
5.3 Reference system scope	12
6. Data Quality	13
6.1 Positional accuracy	13
6.2 Attribute accuracy	13
6.3 Logical consistency	13

6.4	Completeness	14
7.	Data Capture.....	15
7.1	Data capture scope	15
8.	Data Maintenance.....	16
8.1	Maintenance process	16
8.2	Review/publish	18
8.3	FOI data preparation principles.....	18
8.4	Update frequency.....	18
8.5	Maintenance scope	19
9.	Data Product Delivery	20
9.1	Delivery medium information	20
9.2	Units of delivery.....	20
9.3	Medium name	20
9.4	Delivery format information	20
10.	Metadata	23
11.	PSMA Data	24
	Appendix A – Features of Interest Data Model	25
	Appendix B – Data Dictionary.....	26

Tables

Table 1:	FEATURE	26
Table 2:	FEATURE_LOCALITY	27
Table 3:	FEATURE_CATEGORY_AUT	27
Table 4:	FEATURE_CATEGORY_AUT Codes.....	28
Table 5:	FEATURE_ADDRESS_SITE	51
Table 6:	FEATURE_ALIAS.....	51
Table 7:	FEATURE_ALIAS_TYPE_AUT	52
Table 8:	FEATURE_ALIAS_TYPE_AUT Codes	52
Table 9:	FEATURE_PARENT_CHILD	52
Table 10:	FEATURE_STATUS_AUT	53
Table 11:	FEATURE_STATUS_AUT Codes.....	53
Table 12:	FEATURE_POINT	54
Table 13:	FEATURE_LINE.....	55

Table 14: FEATURE_POLYGON.....	55
Table 15: FEATURE_PROCESS_TYPE_AUT	56
Table 16: FEATURE_PROCESS_TYPE_AUT Codes.....	56
Table 17: Hierarchical Features of Interest Levels Table.....	56

1. Overview

1.1 Data product specification title

Features of Interest Product Description

1.2 Reference date

May 2018

1.3 DPS responsible party

PSMA Australia Limited

Level 2, 113 Canberra Avenue, GRIFFITH ACT 2603 Australia

T: +61 2 6260 9000 | F: +61 2 62029001 | E: support@psma.com.au

URL: <http://www.pdma.com.au> | ABN: 23 089 912 710

1.4 Language

English

1.5 Topic category

Features of Interest for points, lines and polygons within Australia.

1.6 Distribution format

PDF

1.7 Glossary

PSMA maintains a glossary of common terms with their definitions and also includes acronyms and abbreviations that are commonly used in relation to PSMA products and services. The glossary is available at the PSMA website at <https://www.pdma.com.au/glossary-and-terms>

1.8 Informal description of the data product

The Features of Interest dataset is one of the newer PSMA products that seeks to capture a variety of features that are represented as points, lines or polygons. The Features of Interest dataset provides a hierarchical classification of features (called feature categories) with four levels. However, the data supplied by the contributors may not be at the third or fourth level and will be represented as the most appropriate feature category.

The Features of Interest dataset is dependent on the completion of PSMA Australia's G-NAF product. As such, the Features of Interest dataset will use the previous quarterly release of PSMA Australia's G-NAF product.

PSMA Australia is currently working to improve the data maintenance processes and has used a new set of processes in the development of the Features of Interest dataset. This improvement in processes will be continually reviewed to produce the highest standards possible in accuracy and quality control.

This may include changes to persistent identifiers that do not conform to PSMA Australia's standard maintenance regime as the processing is refined. Also, it is likely that duplicates exist in the data and as the processing is refined the likelihood of duplicates will be reduced with each release.

1.9 Copyright in Features of Interest dataset

Please see www.psm.com.au/psma-data-copyright-and-disclaimer for the Copyright and Disclaimer Notice for the Features of Interest dataset.

1.10 Privacy

PSMA products and services should not contain any personal names or other personal information. PSMA undertakes reasonable data cleansing steps as part of its production processes to ensure that is the case. If you think that personal information may have inadvertently been included in PSMA products or services, please contact support@psma.com.au

2. Specification Scope

This dataset has no themes.

2.1 Scope identification

Features of Interest Dataset

Level

Dataset

Level name

Features of Interest

Extent

Spatial coverage of Australia's landmass including External Territories and Coastal Islands (including Lord Howe Island). Localities in SA include an unincorporated area which is covered by Mesh Blocks. All data is supplied by the appropriate contributor quarterly.

3. Data Product Identification

3.1 Title

Features of Interest

3.2 Alternate titles

Features of Interest

FOI

3.3 Abstract

The Features of Interest Product Description (an ISO 19131 compliant description) provides a set of basic attributes of the Features of Interest dataset.

Features of Interest dataset is a dataset being delivered by PSMA Australia containing authoritative point, line and polygon data. The data is supplied by governments as well as contributions from selected organisations.

Feature of Interest is a dataset that is applicable to multiple commercial and government situations as it covers many places not described by an official address (e.g. cricket ground, town hall or local church). Features of Interest data includes urban centres, significant buildings, landmarks, public spaces, community facilities and indigenous locations. The Features of Interest is an independent dataset that can be integrated for enhanced functionality with associated datasets including G-NAF.

3.4 Purpose

The Features of Interest dataset provides solutions to the following situations:

- Improved online maps through the inclusion of authoritative feature data for context
- Enhanced personnel navigation experiences through the inclusion of detailed feature data
- National catalogues of significant buildings, landmarks, public spaces, community facilities, through their inclusion of features of interest data
- Enhanced routing products through the inclusion of feature data
- Validation of private databases through the inclusion of feature data.

3.5 Topic category

013 – Location

3.6 Geographic description

The Features of Interest dataset covers the addresses within the complete national geography of Australia (AUS). The Bounding Box for this data is as follows;

North bounding latitude: -8°

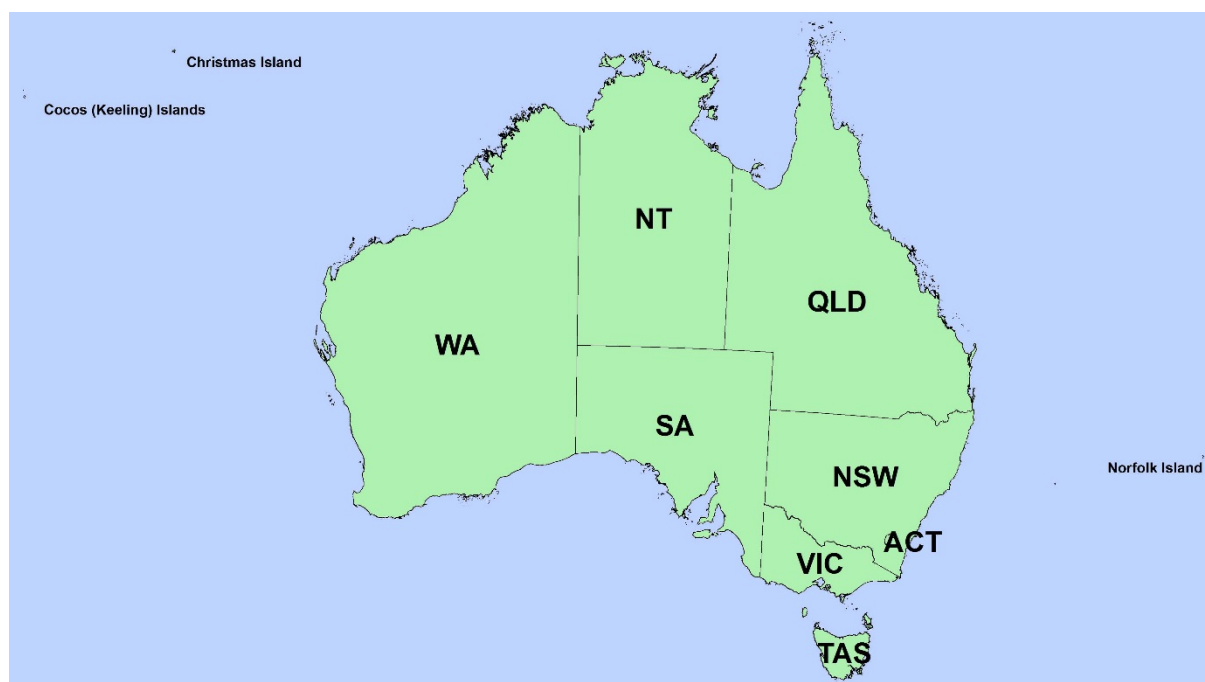
South bounding latitude: -45°

East bounding longitude: 168°

West bounding longitude: 96°

This area covers the land masses of Australia, including External Territories and offshore islands (Christmas Island, Cocos (Keeling) Islands, and Norfolk Island).

The spatial domain is described by the polygon:



Geographic extent name

AUSTRALIA INCLUDING EXTERNAL TERRITORIES – AUS – Australia – Australia

The States and Territories within Australia are represented by the following:

State or Territory Name	Abbreviation	Character Code
New South Wales	NSW	1 (or 01)
Victoria	VIC	2 (or 02)
Queensland	QLD	3 (or 03)
South Australia	SA	4 (or 04)
West Australia	WA	5 (or 05)
Tasmania	TAS	6 (or 06)
Northern Territory	NT	7 (or 07)
Australian Capital Territory	ACT	8 (or 08)
Other Territories	OT	9 (or 09)

Note: PSMA has aligned Other Territories (OT) with the Australian Bureau of Statistics (ABS). It includes the Territory of Christmas Island, Territory of Cocos (Keeling) Islands, Jervis Bay Territory and more recently the inclusion of Norfolk Island. OT does not include any other external Territory.

4. Data Content and Structure

Features of Interest is a feature-based product. A data model is included (Appendix A) with an associated data dictionary (Appendix B).

4.1 Feature-based data

The feature type is based on spatial points, lines and polygons for the various places and features. The table below outlines the features and their integration into the datasets.

Entity	Description	Integration	Rules
Feature	A Feature represents a particular category (or type) of entity as a point, line or polygon.	A Feature has: <ul style="list-style-type: none"> ▪ 0 to many related gazetted Locality records ▪ 0 to many related address site records ▪ 1 related state record 	Must have only 1 feature category code (also known as feature type) 1 to many points, lines or polygons (or a combination) for a feature 0 to many aliases

4.2 Feature-based application schema (data model)

The Features of Interest Data Model Diagram is set out in Appendix A.

4.3 Data dictionary

The feature catalogue in support to the data model is provided in Appendix B. Spatial attributes are added to the feature catalogue in the same manner as other attributes for completeness and conformance to the application schema.

The following table refers to all tables in the Feature Catalogue.

Column	Abbreviation	Description
Name	Name	The name of the column in the Integrated Database
Data Type	Data type	The Oracle data type of the column. Mapinfo TAB files have similar data types.
Description	Description	A description of the column and what the expected contents are
Primary Key?	Prim Key	If 'Y' then this column must always have a unique value. (has # entry in the data model tables)
Obligation	Man	Y = mandatory. If 'Y' (mandatory), this column must be populated with data. That is, all ACTIVE records must have values in this column.
Foreign Key Table	F K TABLE	Represents a column in the 'Foreign Key Table' that this column is referred to by another table. (has * entry in the data model tables)
Foreign Key Column	F K Col	Represents a table in the Integrated Database that this column is referred to.
10 Character Alias	10 Char Alias	An alias for this column name - up to 10 characters maximum. Used to define the name of the column when in ESRI Shapefile format.

4.4 Feature-based content scope

All metadata concerned with Features of Interest dataset.

5. Reference System

5.1 Spatial reference system

GDA 94

5.2 Temporal reference system

Gregorian calendar

5.3 Reference system scope

The spatial objects and temporal collection periods for the G-NAF Datasets

6. Data Quality

6.1 Positional accuracy

Positional accuracy is an assessment of the closeness of the location of the spatial objects in relation to their true positions on the earth's surface.

The positional accuracy includes:

- a horizontal accuracy assessment
- a vertical accuracy assessment

The horizontal and vertical positional accuracy are the assessed accuracy after all transformations have been carried out.

Relative spatial accuracy of Features of Interest reflects that of the contributor's source data. The accuracy varies with most features +/- 2 metres in urban areas and +/- 10 metres in rural and remote areas. However, due to the current processes employed for capturing the location of some feature types such as churches, horizontal accuracy can be as large as +/- 50 metres.

No "shift" of data as a means of "cartographic enhancement" to facilitate presentation has been employed for any real world feature.

6.2 Attribute accuracy

Attribute accuracy is an assessment of the reliability of values assigned to features in the dataset in relation to their true 'real world' values.

Key attributes (name and the unique identifier) have a high degree of accuracy in the order of 99.09%. Other attributes derived from the processing of supplied data may have a lower degree of accuracy but less than previously released data. All attribute accuracies are dependent on the data accuracy supplied to PSMA Australia.

For this product, feature and attribute accuracy is a measure of the degree to which the features and attribute values of spatial objects agree with the information on the source material. The allowable error in attribute accuracy was previously up to 5%.

A precise attribute accuracy assessment may not always be possible. In these cases an intuitive estimate of the expected attribute accuracy or the likely maximum error based on previous experience is acceptable.

6.3 Logical consistency

Logical consistency is a measure of the degree to which data complies with the technical specification. The allowable error in logical consistency previously ranged from 3% to 5%. The test procedures are a mixture of software scripts and onscreen, visual checks.

The data structure has been tested for conformance with the data model. The following have been tested and confirmed to conform:

- File names
- Attribute domains
- Attribute names
- Attribute order in file.
- Attribute lengths
- Object type
- Attribute types

- Compulsory attributes populated

6.4 Completeness

Completeness is an assessment of the extent and range of the dataset with regard to completeness of coverage, completeness of classification and completeness of verification.

Dataset coverage

There is national coverage for some of the feature types, such as urban centres.

Attribute completeness

All attributes for each object are populated.

Temporal accuracy is applicable to most of the current release.

Quality scope

Attribute accuracy for all included areas.

7. Data Capture

All Features of Interest data is captured by the state and territory governments through appropriate agencies. Jurisdiction features information is maintained to meet their various legislative and business requirements.

Data is also supplied from other contributors, which in some cases has required the location to be allocated based on an address.

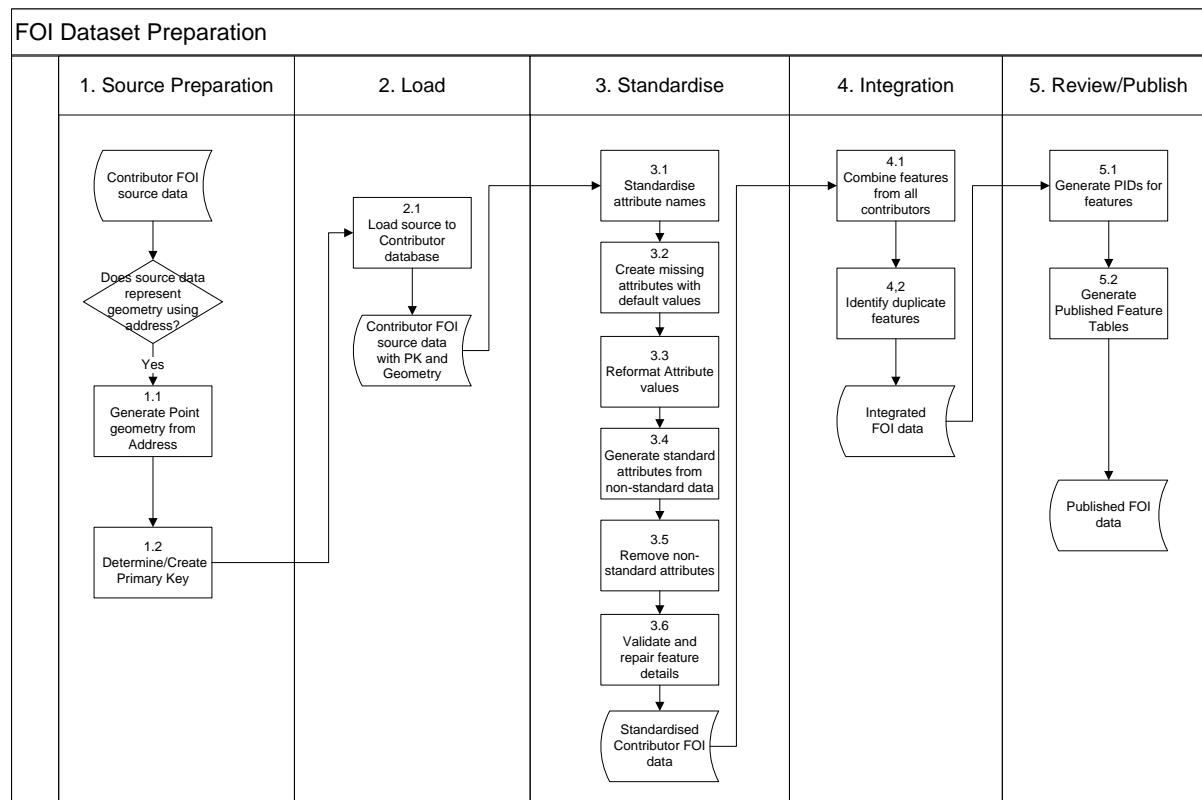
7.1 Data capture scope

Data for changed objects within the current release time period.

8. Data Maintenance

The process map below summarises the steps followed for the initial development of the Features of Interest dataset.

8.1 Maintenance process



Source preparation

Having received some features of interest from a contributor the data is assessed and some cleansing is undertaken prior to loading it into a database ready for standardising and generating features.

Generate point geometry from address

If the contributor has provided the location of a feature using an address then the feature is represented as a point. A geocoding engine is used to geocode the address, ensuring where possible the GNAF location is used. If an address is a street intersection or cannot be exactly matched then an approximation is made of the address location and the feature_process_code is set to 'ADDAPPROX'.

Determine/Create Contributor Primary Key

Determine whether the contributor has provided a field suitable for use as a primary key to uniquely identify the feature. If no field (or concatenation of fields with a length less than 15 characters) is a suitable key then a key is generated across a concatenation of fields that uniquely identify a record.

Load

Load the contributor data into the database in the appropriate schema so that it can be standardised and published.

Standardise

There are a series of steps to standardise the data provided by contributors. This involves ensuring the data is in a standard schema as well as that the contents of each attribute are appropriate. At the end of the standardising process each contributor table is created in a 'standardised' schema of all the contributors' data.

Standardise attribute names

Where the contributor has provided the source data for a feature (e.g. name) then change the attribute name to match the standardised feature schema.

Create missing attributes with default values

Where the contributor has not provided a value for a standard attribute then the attribute is created with a default value.

Reformat attribute values

This step reformats attribute values to standard formats, typically reformatting is conversion of date/time values to yyyy-mm-dd HH:MM:SS

Determine standard attribute value from non-standard data

Mainly used for Feature Category, this step converts contributor specific codes and values into the common PSMA standard values.

Remove non-standard attributes

Remove all the contributor specific data from the features.

Validate and repair feature details

Execute a standard set of validation and repair functions against the contributor's data. This step does the following:

1. Checks if Geometry is valid, reports invalid geometry and attempts to clean the geometry using an AreaOnArea transformation to remove any self-intersections or change invalid donut geometries to aggregates.
2. Reports any zero area polygons and removes them from the feature set.
3. Reports any zero length lines and removes them from the feature set.
4. Determines the state that a feature falls in and reports any variance against the information provided by the contributor.
5. Capitalises the value in attribute feature_name.
6. Defaults the feature_name value to the feature_category if no name is provided.
Note: The feature_name_label will remain null/blank.

Integration

This stage of the process is used to combine all the feature information into common tables and to run standard processes, such as duplicate detection, across the complete set of features. At the end of this process all feature information is held in the 'Integrated' schema.

Identify duplicate features

Identify where features have been provided by multiple contributors, or multiple times by one contributor.

8.2 Review/publish

Generate Identifiers to be published with the features. Most of the identifiers are 10 digit unique numbers starting from 1,000,000,000. However the format of the PIDs on the feature table are: FI_SSS9999999999, where SSS is the state abbreviation (left padded with an underscore) e.g. FI_NT1000000001

The feature tables are published in the final format for review prior to submitting through the QA process. The tables are generated in Postgis and ESRI shape formats.

8.3 FOI data preparation principles

Identifying and resolving features provided by multiple contributors

A feature provided by multiple contributors is considered to be common when it meets the following criteria:

1. The feature provided by each contributor has a common name or alias.
2. The feature provided by each contributor is of a common type
3. The feature provided by each contributor falls within a range defined below.

Feature Type	Urban/Rural	Range for Duplicate (m)
CHURCH	Urban or Rural	20
ABORIGINAL LOCATION	Urban	500
ABORIGINAL LOCATION	Rural	1000
any other feature	Urban	10
any other feature	Rural	1000

When features provided by multiple contributors are common, PSMA retains the feature details provided by the contributors using the following priority:

1. State jurisdiction, within own state.
2. State jurisdiction, in another state.
3. Additional contributor

Approximation of point location

If a contributor provides a street address for the location of a feature then PSMA utilizes a geocoding engine to determine the point for the feature. In the event that the street address cannot be matched PSMA Australia creates an approximation to the address and sets field 'process_type_code' in table 'FEATURE_POINT' to 'ADDAPPROX' to indicate a precise match was not made.

Creation of points for polygon features

If a feature (other than a building footing) is represented by a single polygon, but no point, then a point is generated for the feature. The point will fall inside the polygon.

When a feature is provided without a name then the feature type is used as the default name. e.g. If a contributor provides a feature of type 'Fire Lookout', but does not provide a feature name then the feature name is defaulted to 'FIRE LOOKOUT'.

8.4 Update frequency

The Features of Interest is released every quarter in the months of February, May, August and November. The Features of Interest dataset is updated as deemed necessary by the Jurisdictions currently supplying data.

8.5 Maintenance scope

PSMA Australia's data maintenance occurs for existing objects with changed geometry and/or attributes, as well as data for new objects within the release time period.

9. Data Product Delivery

PSMA Australia is the crucial link between the supply and demand sides of the market for the fundamental national spatial datasets that it offers under the banner of PSMA Data. The organisation eliminates the difficulties of negotiating multiple license agreements with Australian governments and the problems of integrating the data into a seamless consistent national dataset. Furthermore, the existence of PSMA Australia minimises the duplication of effort within the market for organisations wishing to access national data.

Access to PSMA Data is enabled through a network of value-added resellers who are licensed by, and work closely with PSMA Distribution, the wholly owned subsidiary of PSMA Australia. Value-added resellers create many powerful and varied applications that use PSMA Data. PSMA Distribution provides strategic support to value-added resellers to ensure that both the public and private sectors obtain the maximum benefit from the use of PSMA Data. PSMA Australia's website www.psmacom.au provides a value-added reseller directory to assist those interested in accessing PSMA Data.

Current users of PSMA Data should contact their value-added reseller for clarification or guidance before contacting PSMA Distribution.

For further information on accessing PSMA Data, or becoming a value-added reseller contact:

PSMA Distribution
Unit 6, 113 Canberra Avenue, Griffith ACT 2603
T: 02 6260 9000
F: 02 6260 9001
E: enquiries@psma.com.au
W: www.psmacom.au

9.1 Delivery medium information

PSMA Systems is a cutting-edge data platform that has been developed to hold, quality assure and distribute PSMA Australia's suite of national spatial datasets. It streamlines PSMA Australia's data delivery. The core of PSMA Systems is the Integrated Database (IDB), which holds our suite of datasets in one location and within a single environment.

PSMA Australia provides data updates to licensees through data download. This service is supported by a detailed user guide.

9.2 Units of delivery

Datasets as prescribed in the license agreement brokered by PSMA Distribution.

9.3 Medium name

Online.

9.4 Delivery format information

MapInfo

Format Name:

TAB – MapInfo Professional™

Specification:

The MapInfo TAB format is a popular geospatial vector data format for geographic information systems software. It is developed and regulated by MapInfo as a proprietary format. This format includes files with the following extensions: *.tab, *.dat, *.id, *.map

TAB files support geospatial standards such as Open GIS, the OGC, ISO, W3C and others.

Language:

English

Shape

Format Name:

Shape – ESRI™

Specification:

This format includes files with the following extensions: *.shp, *.shx, *.dbf

ESRI Shapefile Technical Description, an ESRI White Paper, July 1998

Follow this link: www.esri.com/library/whitepapers/pdfs/shapefile.pdf

Language:

English

Oracle Dump

Format Name:

Oracle data base files – Oracle™

Specification:

This format includes files with the following extensions: *.dmp

Language:

English

Oracle Data Pump

Format Name:

Oracle 11g Data Pump Format

Specification:

The Data Pump (dump) file set is made up of one or more files that contain table data, database object metadata, and control information. More information is available from [Oracle](#)

Language:

English

10. Metadata

ANZLIC Metadata Profile Guidelines v1.1 are available from the following links:

ANZLIC – The Spatial Information Council

<http://www.anzlic.org.au/policies.html>

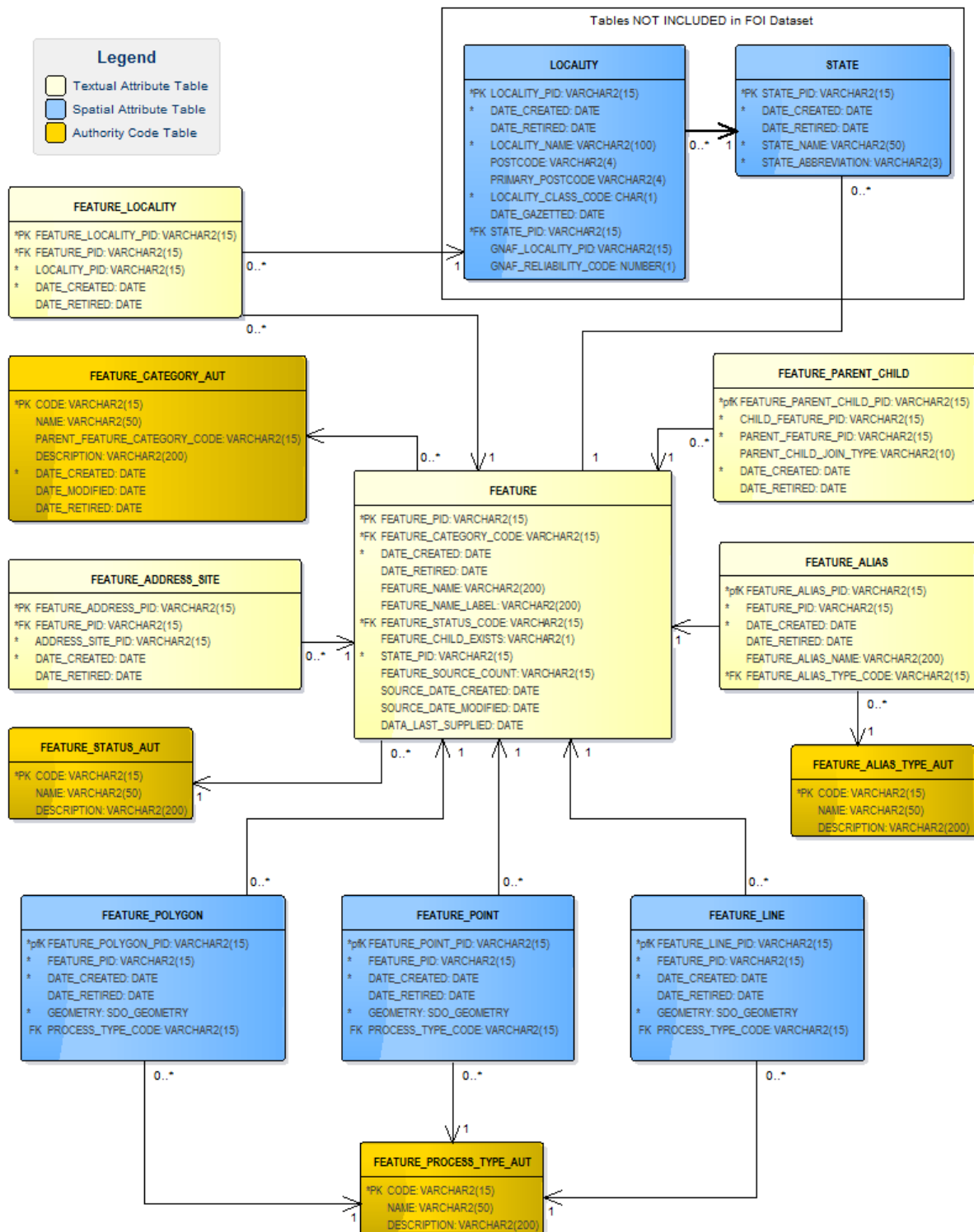
Australian Spatial Data Directory (ASDD)

<http://asdd.ga.gov.au/profileinfo/>

11. PSMA Data

DATASET	ACCESS	THEME	LAYER	
Administrative Boundaries	Open Data (www.data.gov.au) PSMA Partner Network	ABS Boundaries 2011	2011 ABS Mesh Blocks	
			Indigenous Location (ILOC)	
			Indigenous Areas (IARE)	
			Indigenous Region (IREG)	
			Remoteness Areas (RA)	
			Socio-Economic Indexes for Areas (SEIFA)	
			Urban Centre Localities /Section of State	
			Significant Urban Areas (SUA)	
		ABS Boundaries 2016	2016 ABS Mesh Blocks and Statistical Areas	
			2016 ABS Indigenous Regions, Areas and Locations	
			2016 Urban Centre and Locality - Section of State - Significant Urban Area	
			2016 Remoteness Areas (RA)	
			2016 Socio-Economic Indexes for Areas (SEIFA)	
			Commonwealth Electoral Boundaries	
			State Electoral Boundaries	
Electoral Boundaries				
Local Government Areas (LGAs)				
Suburbs/Localities				
State Boundaries				
Town Points				
Wards				
CadLite	PSMA Partner Network		Cadastre	
			Property	
Geoscape	PSMA Partner Network		Buildings	
			Surface Cover	2 Metres
				30 Metres
			Trees	
G-NAF	Open Data (www.data.gov.au) PSMA Partner Network	Geocoded physical addresses		
Land Tenure	PSMA Partner Network	Land Tenure		
Features of Interest	PSMA Partner Network	Features of Interest		
Postcodes	PSMA Partner Network	Postcode Boundaries		
Transport & Topography	PSMA Partner Network	Transport	Roads	
			Rail	
			Rail Stations	
			Airports	
		Hydrology		
		Greenspace		

Appendix A – Features of Interest Data Model



Appendix B – Data Dictionary

Table 1: FEATURE

Name	Data Type	Description	Prim Key	Man	F K TABLE	F K Col	10 Char Alias
FEATURE_PID	varchar2(15)	The Persistent Identifier is unique to the real world feature this record represents.	Y	Y	-	-	FEAT_PID
FEATURE_CATEGORY_CODE	varchar2(15)	The feature category code.	N	Y	FEATURE_CATEGORY_AUT	CODE	FEAT_CA_CD
DATE_CREATED	date	Date this record was created.	N	Y	-	-	DT_CREATE
DATE_RETIRED	date	Date this record was retired.	N	N	-	-	DT_RETIRE
FEATURE_NAME	varchar2(200)	The name of the feature.	N	Y			FEAT_NAME
FEATURE_NAME_LABEL	varchar2(200)	The feature name label.	N	Y			FT_NAM_LBL
FEATURE_STATUS_CODE	varchar2(15)	The feature status code.	N	Y			FEAT_ST_CD
FEATURE_CHILD_EXISTS	varchar2(1)	Feature child exists.	N	Y			FEAT_CHILD
STATE_PID	varchar2(3)	State or territory persistent identifier.	N	Y	STATE	STATE_PID	STATE_PID
FEATURE_SOURCE_COUNT	varchar2(15)	An indication of the number of contributors for this data.	N	Y			FT_SRC_CNT
DATA_LAST_SUPPLIED	date	Date when feature last supplied.	N	N			DT_LASTSUP
SOURCE_DATE_MODIFIED	date	Where available, the date modified recorded in the source data.	N	N			SDT_MODIFY
SOURCE_DATE_CREATED	date	Where available, the date created recorded in the source data.	N	N			SDT_CREATE

Table 2: FEATURE_LOCALITY

Name	Data Type	Description	Prim Key	Man	F K TABLE	F K Col	10 Char Alias
FEATURE_LOCALITY_PID	varchar2(15)	The Persistent Identifier is unique to the real world feature this record represents.	Y	Y	-	-	FT_LOC_PID
FEATURE_PID	varchar2(15)	The persistent identifier for the feature.	N	Y	FEATURE	FEATURE_PID	FEAT_PID
LOCALITY_PID	varchar2(15)	The gazetted locality the feature falls in.	N		LOCALITY	LOCALITY_PID	LOC_PID
DATE_CREATED	date	Date this record was created.	N	Y	-	-	DT_CREATE
DATE_RETIRED	date	Date this record was retired.	N	N	-	-	DT_RETIRE

Table 3: FEATURE_CATEGORY_AUT

This table is not a typical AUT table as the DATE_CREATED, DATE_MODIFIED and DATE_RETIRED are provided so that incremental changes to features are more readily tracked.

Name	Data Type	Description	Prim Key	Man	F K TABLE	F K Col	10 Char Alias
CODE	varchar2(15)	The Persistent Identifier is unique to the real world feature this record represents.	Y	Y	-	-	CODE
NAME	varchar2(50)	User-friendly name for the feature category code represents.	N	N	-	-	NAME
PARENT_FEATURE_CATEGORY_CODE	varchar2(15)	Parent feature category code	N	Y	FEATURE_TYPE_AUT	CODE	PA_FT_C_CD
DESCRIPTION	varchar2(200)	User-friendly description for the feature category code represents.	N	N			DSCPN
DATE_CREATED	date	Date this record was created.	N	Y	-	-	DT_CREATE
DATE_MODIFIED	date	Date this record was modified.	N	Y	-	-	DT_MODIFY
DATE_RETIRED	date	Date this record was retired.	N	N	-	-	DT_RETIRE

Table 4: FEATURE_CATEGORY_AUT Codes

CODE	NAME	DESCRIPTION	PARENT Code
BDG	BUILDING		
BDG001	ADMINISTRATION FACILITY		BDG
BDG001001	GOVERNMENT OFFICE		BDG001
BDG001001001	AUSTRALIAN GOVERNMENT OFFICE	INCLUDES FEDERAL GOVERNMENT AND COMMONWEALTH GOVERNMENT OFFICES	BDG001001
BDG001001001001	AUSTRALIAN HEARING		BDG001001001
BDG001001001002	AUSTRALIAN TAX OFFICE		BDG001001001
BDG001001001003	CENTRELINK		BDG001001001
BDG001001001004	CHILD SUPPORT AGENCY		BDG001001001
BDG001001001005	CRS AUSTRALIA		BDG001001001
BDG001001001006	MEDICARE AUSTRALIA		BDG001001001
BDG001001001007	AUSTRALIAN CUSTOMS		BDG001001001
BDG001001002	STATE GOVERNMENT OFFICE	OFFICE OF STATE OR TERRITORY REPRESENTATIVES	BDG001
BDG001001002001	ACCESS CENTRE		BDG001001002
BDG001001002002	CUSTOMER SERVICE CENTRE		BDG001001002
BDG001001002003	JUSTICE SERVICE CENTRE		BDG001001002
BDG001001002004	RANGERS OFFICE		BDG001001002
BDG001001002005	REGIONAL OFFICE		BDG001001002
BDG001001002006	TRANSPORT OR LICENSING CENTRE	TRANSPORT AUTHORITY / LICENSING CENTRE	BDG001001002
BDG001001003	LOCAL GOVERNMENT OFFICE	LOCAL GOVERNMENT OFFICE OR CHAMBERS	BDG001
BDG001001004	PARLIAMENT		BDG001001
BDG001002	CUSTODIAL SERVICE		BDG001

CODE	NAME	DESCRIPTION	PARENT Code
BDG001003	CUSTOMER SERVICES		BDG001
BDG001004	DIPLOMATIC MISSION	OFFICE OF A COUNTRY'S DIPLOMATIC REPRESENTATIVES SUCH AS A EMBASSY, HIGH COMMISSION OR CONSULATE	BDG001
BDG001005	COURT	LAW COURT, COURT HOUSE OR TRIBUNAL	BDG001
BDG001006	OFFICE		BDG001
BDG001007	POST OFFICE		BDG001
BDG001008	PRISON	PRISON, GAOL, REMAND CENTRE OR DETENTION CENTRE	BDG001
BDG001009	RESEARCH STATION		BDG001
BDG001010	SHERIFFS OFFICE		BDG001
BDG001011	TOURIST INFORMATION CENTRE		BDG001
BDG001012	WEATHER STATION	WEATHER STATION OR METEOROLOGICAL STATION	BDG001
BDG002	RUIN		BDG
BDG003	STRUCTURE		BDG
BDG004	CARE FACILITY	INCLUDES NURSING HOME	BDG
BDG004001	AGED CARE		BDG004
BDG004002	ANIMAL CARE	ANIMAL CARE OR VETERINARY PRACTICE	BDG004
BDG004003	CHILD CARE	INCLUDES CRECHE	BDG004
BDG004004	DISABILITY SUPPORT	INCLUDES DISABLED SUPPORT	BDG004
BDG004005	HOSPICE		BDG004
BDG005	COMMERCIAL FACILITY		BDG
BDG005001	ACCOMMODATION		BDG005
BDG005001001	BED AND BREAKFAST	INCLUDES GUEST HOUSE	BDG005001
BDG005001002	FARMSTAY		BDG005001
BDG005001003	HOSTEL		BDG005001

CODE	NAME	DESCRIPTION	PARENT Code
BDG005001004	HOTEL		BDG005001
BDG005001005	MOTEL	INCLUDES MOTOR INN	BDG005001
BDG005001006	PRIVATE ORGANISATION ACCOMMODATION	INCLUDES BOARDING HOUSE, LODGING HOUSE, PRIVATE HOTEL	BDG005001
BDG005001007	SELF CATERED ACCOMMODATION		BDG005001
BDG005002	BUSINESS PARK		BDG005
BDG005003	CONFERENCE CENTRE	CONFERENCE OR EXHIBITION CENTRE	BDG005
BDG005004	EMPLOYMENT AND RECRUITMENT SERVICE		BDG005
BDG005005	ENTERTAINMENT CENTRE		BDG005
BDG005006	FOOD OR BEVERAGE OUTLET		BDG005
BDG005006001	BREWERY OUTLET		BDG005006
BDG005006002	RESTAURANT	INCLUDES CAFE	BDG005006
BDG005006003	DISTILLERY		BDG005006
BDG005006004	FAST FOOD		BDG005006
BDG005006005	TAVERN	INCLUDES BAR	BDG005006
BDG005006006	WINERY		BDG005006
BDG005007	FUEL OUTLET	INCLUDES SERVICE STATION	BDG005
BDG005008	LEGAL OR FINANCIAL		BDG005
BDG005008001	BANKING		BDG005008
BDG005008002	INSURANCE		BDG005008
BDG005008003	INVESTMENT		BDG005008
BDG005008004	LEGAL		BDG005008
BDG005009	MEDIA		BDG005
BDG005010	RENTAL SERVICE	RENTAL OR HIRE SERVICE	BDG005
BDG005010001	BIKE HIRE		BDG005010

CODE	NAME	DESCRIPTION	PARENT Code
BDG005010002	WATER CRAFT HIRE	INCLUDES BOAT HIRE	BDG005010
BDG005010003	MACHINERY HIRE		BDG005010
BDG005010004	VEHICLE HIRE		BDG005010
BDG005011	SERVICE STATION		BDG005
BDG005012	SHOP	INCLUDES RETAIL OUTLET	BDG005
BDG005013	SHOPPING CENTRE		BDG005
BDG005014	SHOPPING PRECINCT		BDG005
BDG005015	SUPERMARKET		BDG005
BDG005016	MARKET		BDG005
BDG006	COMMUNITY VENUE		BDG
BDG006001	COMMUNITY CENTRE	INCLUDES MULTICULTURAL CENTRE	BDG006
BDG006002	COMMUNITY HOME		BDG006
BDG006003	CO-OPERATIVE		BDG006
BDG006004	CREMATORIUM		BDG006
BDG006005	HALL		BDG006
BDG006006	NEIGHBOURHOOD HOUSE		BDG006
BDG006007	SENIOR CITIZENS		BDG006
BDG006008	TELECENTRE		BDG006
BDG006009	YOUTH CENTRE		BDG006
BDG007	CULTURAL CENTRE		BDG
BDG007001	AQUARIUM		BDG007
BDG007002	ARBORETUM		BDG007
BDG007003	ART GALLERY		BDG007
BDG007004	CINEMA	INCLUDES DRIVE-IN THEATRE	BDG007

CODE	NAME	DESCRIPTION	PARENT Code
BDG007005	CONSERVATORY		BDG007
BDG007006	LIBRARY		BDG007
BDG007007	MUSEUM		BDG007
BDG007008	OBSERVATORY		BDG007
BDG007009	THEATRE	INCLUDES CONCERT HALL, AMPHITHEATRE	BDG007
BDG008	EDUCATION CENTRE		BDG
BDG008001	ACADEMY		BDG008
BDG008002	ADMINISTRATION SUPPORT		BDG008
BDG008003	EDUCATION COMPLEX		BDG008
BDG008004	FURTHER EDUCATION		BDG008
BDG008005	KINDERGARTEN		BDG008
BDG008006	PRE SCHOOL		BDG008
BDG008007	PRIMARY SCHOOL		BDG008
BDG008008	PRIMARY AND SECONDARY SCHOOL	A COMBINED PRIMARY AND SECONDARY SCHOOL	BDG008
BDG008009	SCHOOL CAMP		BDG008
BDG008010	SECONDARY SCHOOL	SECONDARY SCHOOL OR HIGH SCHOOL	BDG008
BDG008011	SPECIAL SCHOOL		BDG008
BDG008012	SPECIALISED STUDIES		BDG008
BDG008013	STUDENT RESIDENTIAL FACILITY		BDG008
BDG008014	TERTIARY INSTITUTION		BDG008
BDG008014001	TAFE COLLEGE		BDG008014
BDG008014002	UNIVERSITY		BDG008014
BDG008015	SCHOOL	SCHOOL UNDEFINED TYPE	BDG008
BDG008016	COLLEGE		BDG008

CODE	NAME	DESCRIPTION	PARENT Code
BDG008017	EXTRA CURRICULAR FACILITY		BDG008
BDG009	EMERGENCY FACILITY		BDG
BDG009001	AMBULANCE STATION		BDG009
BDG009002	MARINE RESCUE	COAST GUARD OR MARINE RESCUE SERVICES	BDG009
BDG009003	EMERGENCY COMPLEX	EMERGENCY COMPLEX OR EMERGENCY SERVICES AGENCY	BDG009
BDG009004	FIRE LOOKOUT	FIRE TOWER OR OBSERVATION TOWER	BDG009
BDG009005	FIRE STATION	INCLUDES CAREER FIRE AND RESCUE SERVICES	BDG009
BDG009006	FIRE STATION (FOREST INDUSTRY)		BDG009
BDG009007	FIRE STATION (RURAL)	INCLUDES VOLUNTEER FIRE AND RESCUE SERVICES	BDG009
BDG009008	LIFESAVING CLUB		BDG009
BDG009009	NEIGHBOURHOOD SAFER PLACE	AN AREA OR PREMISES THAT MAY, AS A LAST RESORT, PROVIDE SOME SANCTUARY FROM THE LIFE THREATENING EFFECTS OF A BUSHFIRE (I.E. DIRECT FLAME CONTACT OR RADIANT HEAT). INCLUDES COMMUNITY FIRE REFUGE	BDG009
BDG009010	POLICE STATION		BDG009
BDG009011	REFUGE		BDG009
BDG009012	SES FACILITY	STATE EMERGENCY SERVICES FACILITY	BDG009
BDG010	HEALTH FACILITY		BDG
BDG010001	BLOOD DONOR CLINIC		BDG010
BDG010002	COMMUNITY HEALTH CENTRE		BDG010
BDG010003	COUNSELLING AND PSYCHOLOGY		BDG010
BDG010004	DAY PROCEDURE CENTRE	DAY PROCEDURE CENTRE OR DAY SURGERY CENTRE	BDG010
BDG010005	DENTAL PRACTICE	INCLUDES DENTAL HEALTH CENTRE	BDG010
BDG010006	MATERNAL AND CHILD HEALTH CENTRES		BDG010
BDG010007	MEDICAL CENTRE		BDG010

CODE	NAME	DESCRIPTION	PARENT Code
BDG010008	NURSING POST		BDG010
BDG011	HOSPITAL		BDG
BDG011001	BUSH NURSING HOSPITAL		BDG011
BDG011002	CHILDREN HOSPITAL		BDG011
BDG011003	DENTAL HOSPITAL		BDG011
BDG011004	GENERAL HOSPITAL		BDG011
BDG011005	GENERAL HOSPITAL (EMERGENCY)		BDG011
BDG011006	HOSPITAL COMPLEX		BDG011
BDG011007	PSYCHIATRIC HOSPITAL		BDG011
BDG011008	REHABILITATION HOSPITAL		BDG011
BDG011009	WOMEN HOSPITAL		BDG011
BDG012	INDUSTRIAL FACILITY		BDG
BDG012001	ABATTOIR		BDG012
BDG012002	BATTERY		BDG012
BDG012003	BLAST FURNACE		BDG012
BDG012004	BREWERY		BDG012
BDG012005	BRICKWORKS		BDG012
BDG012006	CEMENT PLANT		BDG012
BDG012007	DAIRY		BDG012
BDG012008	FACTORY		BDG012
BDG012009	INTENSIVE ANIMAL PRODUCTION		BDG012
BDG012010	IRON ORE PROCESSOR		BDG012
BDG012011	LIVESTOCK YARD		BDG012
BDG012012	LPG PLANT		BDG012

CODE	NAME	DESCRIPTION	PARENT Code
BDG012013	MAINTENANCE DEPOT		BDG012
BDG012014	MINERAL SAND PROCESSING PLANT		BDG012
BDG012015	NICKEL SMELTER		BDG012
BDG012016	OIL PROCESSING PLANT		BDG012
BDG012017	PRINTING		BDG012
BDG012018	PROVING GROUND		BDG012
BDG012019	REFINERY		BDG012
BDG012019001	ALUMINA REFINERY		BDG012019
BDG012019002	GOLD REFINERY		BDG012019
BDG012019003	NICKEL REFINERY		BDG012019
BDG012019004	OIL REFINERY		BDG012019
BDG012019005	SUGAR REFINERY		BDG012019
BDG012020	TIMBER OPERATIONS	SAWMILL, MILL OR TIMBER OPERATIONS	BDG012
BDG012021	SILICON SMELTER		BDG012
BDG012022	STEEL ROLLING MILL		BDG012
BDG012023	WAREHOUSE		BDG012
BDG013	ORGANISATION		BDG
BDG013001	ANIMAL REFUGE		BDG013
BDG013002	CHARITY AND VOLUNTEER ORGANISATION		BDG013
BDG013003	CITIZENS ADVICE BUREAU		BDG013
BDG013004	POLITICAL PARTY		BDG013
BDG013005	CLUB	INCLUDES SOCIAL CLUB, LEAGUES CLUB, FOOTBALL CLUB, LABOR CLUB, ETHNIC CLUB	BDG013
BDG013006	WORKERS UNION		BDG013

CODE	NAME	DESCRIPTION	PARENT Code
BDG013007	YOUTH ORGANISATION		BDG013
BDG013007001	GIRL GUIDES		BDG013007
BDG013007002	SCOUTS		BDG013007
BDG013007003	YMCA		BDG013007
BDG013007004	YWCA		BDG013007
BDG014	PLACE OF WORSHIP		BDG
BDG014001	CHURCH		BDG014
BDG014001001	ANGLICAN		BDG014001
BDG014001002	ASSEMBLIES OF GOD	AUSTRALIAN CHRISTIAN CHURCHES	BDG014001
BDG014001003	BAPTIST		BDG014001
BDG014001004	CATHOLIC	ALSO ROMAN CATHOLIC	BDG014001
BDG014001005	CHRISTIAN LIFE		BDG014001
BDG014001006	CHURCH OF CHRIST		BDG014001
BDG014001007	INDEPENDENT		BDG014001
BDG014001008	LUTHERAN		BDG014001
BDG014001009	NAZARENE		BDG014001
BDG014001010	PENTECOSTAL		BDG014001
BDG014001011	PRESBYTERIAN	INCLUDES CHRISTIAN REFORMED CHURCH	BDG014001
BDG014001012	SALVATION ARMY		BDG014001
BDG014001013	UNITING		BDG014001
BDG014001014	WESLEYAN METHODIST		BDG014001
BDG014001015	APOSTOLIC		BDG014001
BDG014001016	CHRISTIAN BRETHERN		BDG014001
BDG014001017	JEHOVAHS WITNESSES		BDG014001

CODE	NAME	DESCRIPTION	PARENT Code
BDG014001018	LATTER-DAY SAINTS	INCLUDES CHURCH OF JESUS CHRIST OF LATTER-DAY SAINTS, MORMON CHURCH	BDG014001
BDG014001019	SEVENTH-DAY ADVENTIST		BDG014001
BDG014002	MONASTERY	CONVENT OR MONASTERY	BDG014
BDG014003	GURDWARA (SIKH)		BDG014
BDG014004	MONDIR (HINDU)		BDG014
BDG014005	MOSQUE		BDG014
BDG014006	SYNAGOGUE		BDG014
BDG014007	VIHARA (BUDDHIST)		BDG014
BDG015	RESIDENTIAL BUILDING		BDG
BDG015001	HOUSE		BDG015
BDG015002	RETIREMENT HOME		BDG015
BDG015003	RETIREMENT COMPLEX	INCLUDES RETIREMENT VILLAGE AND RETIREMENT ESTATE	BDG015
BDG015004	APARTMENT		BDG015
BDG015005	MOBILE HOME	INCLUDES RELOCATABLE HOME VILLAGE	BDG015
BDG016	MULTI-UNIT BUILDING		BDG
GEO	GEOGRAPHY		
GEO003	PHYSIOGRAPHIC		GEO
GEO003002	BEACH		GEO003
GEO003003	BREAKWATER	INCLUDES SEA WALL	GEO003
GEO003004	CAVE	INCLUDES ROCK HOLE	GEO003
GEO003005	CLIFF	INCLUDES ESCARPMENT, BLUFF	GEO003
GEO003006	CRATER		GEO003
GEO003007	FLAT	PLAIN, DOWNS, PRAIRIE OR SIMILAR FLAT FEATURE	GEO003

CODE	NAME	DESCRIPTION	PARENT Code
GEO003008	GORGE	INCLUDES RAVINE, CANYON, CHASM	GEO003
GEO003009	HEADLAND	POINT, HEAD, HEADLAND, SPIT, NESS, CAPE, PROMONTORY OR SIMILAR FEATURE	GEO003
GEO003011	LAVA FLOW		GEO003
GEO003012	MOUNTAIN	MOUNTAIN OR PEAK	GEO003
GEO003013	NATURAL REGION	RANGE, MOUNTAIN RANGE, DESERT, MOOR, CATCHMENT	GEO003
GEO003014	PASS	PASS, GAP OR SADDLE	GEO003
GEO003015	PENINSULA	PENINSULA OR SPIT	GEO003
GEO003016	PLATEAU	PLATEAU OR TABLELAND	GEO003
GEO003017	RIDGE	SPUR	GEO003
GEO003018	ROCK TERRESTRIAL	ROCK, BOULDER, PINNACLE, CRAG, NEE, ROCK FACE, NEEDLE, PILLAR	GEO003
GEO003019	SANDBAR	SANDBAR, SHOAL OR SANDBANK	GEO003
GEO003020	VALLEY	DALE, DELL, VALE	GEO003
GEO003021	HILL	HILL, KNOLL, KNOB, MESA, SUGARLOAF, TOR	GEO003
GEO003022	BIGHT	RECESS OF SHORELINE	GEO003
GEO003023	BASIN	ALSO KNOWN AS DEPRESSION, SINK OR DRAIN WHERE WATER DRAINS TO COMMON AREA	GEO003
GEO003024	ISTHMUS	ALSO KNOWN AS NECK	GEO003
GEO003026	GULLY		GEO003
GEO003027	ENTRANCE		GEO003
GEO004	PLACE		GEO
GEO004001	ABORIGINAL LOCATION	ABORIGINAL LOCATION OR COMMUNITY	GEO004
GEO004002	ABORIGINAL SITE	ABORIGINAL SITE OF CULTURAL OR HISTORIC SIGNIFICANCE	GEO004
GEO004003	CENSUS DISTRICT		GEO004
GEO004004	HISTORIC SITE	SITE OF CULTURAL OR HISTORIC SIGNIFICANCE	GEO004

CODE	NAME	DESCRIPTION	PARENT Code
GEO004005	HOMESTEAD		GEO004
GEO004006	LOCALITY BOUNDED	INCLUDES SUBURBS BOUNDED	GEO004
GEO004007	LOCALITY UNBOUNDED	INCLUDES SUBURBS UNBOUNDED	GEO004
GEO004008	MINING CENTRE		GEO004
GEO004009	NEIGHBOURHOOD		GEO004
GEO004010	REGION	COMMONLY KNOWN NAME FOR A REGION OR DISTRICT	GEO004
GEO004011	ROADHOUSE		GEO004
GEO004012	URBAN CENTRE	INCLUDES BUILT-UP AREA	GEO004
GEO004012001	CITY		GEO004012
GEO004012002	TOWN		GEO004012
GEO004013	VILLAGE		GEO004
GEO004014	ESTATE	COMMON NAME USED BY DEVELOPERS FOR RESIDENTIAL ESTATE	GEO004
GEO004015	JUNCTION		GEO004
GEO004016	BOUNDARY		GEO004
GEO004017	COUNTY		GEO004
GEO004018	PARISH		GEO004
GEO004019	RURAL PLACE		GEO004
GEO004023	PEDESTRIAN AREA		GEO004
GEO004024	INDUSTRIAL AREA		GEO004
GEO004025	COMMERCIAL AREA		GEO004
GEO004026	SHOPPING AREA		GEO004
LMU	LAND/MARINE USE ACTIVITY AREA		
LMU001	AGRICULTURAL AREA		LMU

CODE	NAME	DESCRIPTION	PARENT Code
LMU001001	AQUACULTURE		LMU001
LMU001002	FARM		LMU001
LMU001003	ORCHARD		LMU001
LMU001005	VINEYARD		LMU001
LMU001006	NURSERY	PLANT, GARDEN OR HORTICULTURE FACILITY	LMU001
LMU002	COMMUNITY SPACE		LMU
LMU002001	CAMP GROUND		LMU002
LMU002002	CARAVAN PARK		LMU002
LMU002003	PARKING AREA	PARKING AREA OR CAR PARK	LMU002
LMU002004	REST AREA		LMU002
LMU002005	SHOWGROUND		LMU002
LMU003	DEFENCE SITE		LMU
LMU003001	AIR FORCE BASE		LMU003
LMU003002	ARMY BASE	BARRACKS OR ARMY BASE	LMU003
LMU003003	MILITARY AREA	MILITARY AREA OR DEFENCE PRACTICE AREA	LMU003
LMU003004	NAVAL BASE		LMU003
LMU004	DUMPING GROUND		LMU
LMU004001	WASTE DISPOSAL	LANDFILL, WASTE DISPOSAL OR RUBBISH DEPOT	LMU004
LMU004002	LIQUID WASTE DISPOSAL SITE		LMU004
LMU004003	SCRAP YARD		LMU004
LMU004004	SPOIL BANKS		LMU004
LMU004005	TAILINGS		LMU004
LMU004006	TRANSFER STATION	INCLUDES RECYCLING DEPOT, COMPOSTING FACILITY	LMU004
LMU005	EXCAVATION SITE		LMU

CODE	NAME	DESCRIPTION	PARENT Code
LMU005001	ABANDONED MINE		LMU005
LMU005002	ABANDONED QUARRY		LMU005
LMU005003	ADIT		LMU005
LMU005004	MINE		LMU005
LMU005005	QUARRY		LMU005
LMU006001	OUTDOOR THEATRE	INCLUDES AMPHITHEATRE, OUTDOOR THEATRE, DRIVE-IN THEATRE	LMU006
LMU006002	BANDSTAND		LMU006
LMU006003	BMX TRACK		LMU006
LMU006004	BOAT RAMP	ALSO KNOWN AS LANDING RAMP OR BOAT LAUNCH	LMU006
LMU006005	CLUB HOUSE		LMU006
LMU006006	DEFINED WATERSPORT ZONE		LMU006
LMU006007	FLYING FOX		LMU006
LMU006008	GRANDSTAND		LMU006
LMU006009	GROUP CAMP		LMU006
LMU006010	HUT		LMU006
LMU006011	OFF ROAD VEHICLE AREA		LMU006
LMU006012	PICNIC AREA	PICNIC SITE OR AREA	LMU006
LMU006013	PLAYGROUND		LMU006
LMU006014	PUBLIC TOILETS		LMU006
LMU006015	PWC TAKE OFF POINT	PERSONAL WATER CRAFT TAKE OFF POINT	LMU006
LMU006016	SKATE PARK		LMU006
LMU007001	AMUSEMENT CENTRE	AMUSEMENT CENTRE OR THEME PARK	LMU007
LMU007003	CEMETERY		LMU007
LMU007004	CITY SQUARE		LMU007

CODE	NAME	DESCRIPTION	PARENT Code
LMU007008	GARDENS	GARDENS OR BOTANIC GARDEN	LMU007
LMU007018	WILDERNESS AREA	WILDERNESS PARK OR AREA	LMU007
LMU007019	ZOO	ZOO OR ZOOLOGICAL GARDEN	LMU007
LMU007020	FIREBREAK	FIREBREAK OR FIREGUARD	LMU007
LMU007021	WILDLIFE SANCTUARY		LMU007
LMU008	SPORT FACILITY		LMU
LMU008001	AQUATIC CENTRE		LMU008
LMU008002	ATHLETIC FIELD	ATHLETIC FIELD OR TRACK	LMU008
LMU008003	BASKETBALL COURT		LMU008
LMU008004	BOATING CLUB		LMU008
LMU008005	BOWLING GREEN		LMU008
LMU008006	CROQUET GREEN		LMU008
LMU008007	DOG TRACK	DOG OR GREYHOUND TRACK	LMU008
LMU008008	EQUESTRIAN FACILITY		LMU008
LMU008009	GOLF COURSE		LMU008
LMU008010	GOLF DRIVING RANGE		LMU008
LMU008011	HARNESS TRACK	HARNESS OR TROTting TRACK	LMU008
LMU008012	HOCKEY GROUND		LMU008
LMU008013	HORSE TRACK		LMU008
LMU008014	MOTOR TRACK	RACETRACK	LMU008
LMU008015	NETBALL COURT		LMU008
LMU008016	OVAL	INCLUDES CRICKET GROUND	LMU008
LMU008017	RACECOURSE		LMU008
LMU008018	ROWING COURSE		LMU008

CODE	NAME	DESCRIPTION	PARENT Code
LMU008019	RUGBY FIELD		LMU008
LMU008020	SOCCER FIELD		LMU008
LMU008021	SPORTS CLUB		LMU008
LMU008022	SPORTS COMPLEX	SPORTS COMPLEX, SPORTS CENTRE OR SPORTS STADIUM	LMU008
LMU008023	SPORTS GROUND	SPORTS GROUND OR FIELD, PLAYING FIELD	LMU008
LMU008024	SURFING		LMU008
LMU008025	SWIMMING POOL	INCLUDES BATHS, ENCLOSURE	LMU008
LMU008026	SHOOTING COMPLEX	TARGET RANGE, SHOOTING COMPLEX OR RIFLE RANGE	LMU008
LMU008027	TENNIS COURT		LMU008
LMU008028	TRAINING TRACK		LMU008
LMU008029	CYCLING TRACK	VELODROME OR CYCLING TRACK	LMU008
LMU009	STOCKPILE		LMU
LMU009001	OVER BURDEN PILE		LMU009
LMU009002	ROAD MATERIAL PILE		LMU009
LSI	LANDMARK/SUPPORT INFRASTRUCTURE		
LSI001	CONTROL POINT		LSI
LSI001001	SURVEY MONUMENT		LSI001
LSI001002	TRIG STATION		LSI001
LSI003	LANDMARK		LSI
LSI003001	CAIRN		LSI003
LSI003002	FLAG POLE		LSI003
LSI003003	FOUNTAIN		LSI003
LSI003004	GRAVE		LSI003
LSI003005	LIGHT POLE		LSI003

CODE	NAME	DESCRIPTION	PARENT Code
LSI003006	LOOKOUT	LOOKOUT OR OBSERVATION TOWER	LSI003
LSI003007	MEMORIAL		LSI003
LSI003008	MONUMENT		LSI003
LSI003009	SCENIC FEATURE		LSI003
LSI003010	SHIP WRECK		LSI003
LSI003011	TOURIST ATTRACTION	TOURIST ATTRACTION OR SITE	LSI003
LSI003012	TOURIST INFORMATION BAY		LSI003
LSI003013	TOWER	INCLUDES CHIMNEY	LSI003
LSI003014	WINDMILL	INCLUDES WINDPUMP	LSI003
LSI003015	WALKING TRACK		LSI003
LSI004	NAVIGATION AID		LSI
LSI004001	BEACON		LSI004
LSI004002	LIGHTHOUSE		LSI004
LSI004003	WINDSOCK		LSI004
LSI005	SIGN		LSI
LSI005001	BEACH MARKER		LSI005
LSI005002	BUILDING ACCESS MARKER		LSI005
LSI005003	EMERGENCY MARKER		LSI005
LSI005004	FREEWAY ACCESS MARKER		LSI005
LSI005005	HELP PHONE		LSI005
LSI005006	RAIL EXIT (EMERGENCY UNDERGROUND)		LSI005
LSI005007	SNOW POLE		LSI005
LSI005008	TRAFFIC MANAGEMENT EQUIP BOX		LSI005
LSI006	STORAGE FACILITY		LSI

CODE	NAME	DESCRIPTION	PARENT Code
LSI006001	BOATHOUSE		LSI006
LSI006002	DEPOT		LSI006
LSI006003	GAS TANK		LSI006
LSI006004	GRAIN STORAGE	GRAIN BUNKER OR GRAIN STORAGE	LSI006
LSI006005	HANGAR		LSI006
LSI006006	HAY SHED		LSI006
LSI006007	MACHINERY SHED		LSI006
LSI006008	MILK SHED		LSI006
LSI006009	OIL TANK		LSI006
LSI006010	PETROLEUM TANK		LSI006
LSI006011	PONDAGE		LSI006
LSI006012	SHEARING SHED		LSI006
LSI006013	SHED		LSI006
LSI006014	SILO		LSI006
LSI006015	STOCKYARD		LSI006
LSI006016	TANK		LSI006
TRT	TRANSPORT		
TRT001	AIR INFRASTRUCTURE		TRT
TRT001001	AERODROME	AERODROME OR AVIATION TERMINAL	TRT001
TRT001002	AIRPORT		TRT001
TRT001003	AVIATION SERVICE		TRT001
TRT001004	CONTROL TOWER		TRT001
TRT001005	HELIPORT	HELIPAD OR HELIPORT	TRT001

CODE	NAME	DESCRIPTION	PARENT Code
TRT001006	LANDING GROUND	LANDING GROUND OR LANDING STRIP SUITABLE FOR LIGHT AIRCRAFT. INCLUDES AIRFIELD.	TRT001
TRT002	TRANSPORT INFRASTRUCTURE		TRT
TRT002001	BARRIER		TRT002
TRT002002	BUS DEPOT		TRT002
TRT002003	BUS STATION	INCLUDES BUS INTERCHANGE	TRT002
TRT002004	BUS STOP		TRT002
TRT002005	COACH STATION		TRT002
TRT002006	BRIDGE	INCLUDES VIADUCT	TRT002
TRT002006001	FOOTBRIDGE		TRT002006
TRT002006002	RAIL BRIDGE		TRT002006
TRT002006003	ROAD BRIDGE		TRT002006
TRT002006004	WEIGHBRIDGE		TRT002006
TRT002007	FORD	INCLUDES CAUSEWAY	TRT002
TRT002008	LEVEL CROSSING		TRT002
TRT002009	NON SIGNALIZED INTERSECTION		TRT002
TRT002010	RAIL STATION		TRT002
TRT002011	TUNNEL		TRT002
TRT002011001	RAIL TUNNEL		TRT002010
TRT002011002	ROAD TUNNEL		TRT002010
TRT002012	ROAD ATTRIBUTE NODE		TRT002
TRT002013	ROAD END		TRT002
TRT002014	ROAD TRAIN ASSEMBLY AREA		TRT002
TRT002015	ROUNDBABOUT <25M	ROUNDBABOUT LESS THAN 25 METRES IN DIAMETER	TRT002

CODE	NAME	DESCRIPTION	PARENT Code
TRT002016	SIGNALIZED INTERSECTION		TRT002
TRT002017	TAXI RANK		TRT002
TRT002018	TRAM STOP		TRT002
TRT002019	TRANSPORT INTERCHANGE		TRT002
TRT003	TRANSPORT ROUTE		TRT
TRT003001	BUS ROUTE		TRT003
TRT003002	CONNECTOR		TRT003
TRT003003	DISMANTLED RAILWAY		TRT003
TRT003004	DISUSED RAILWAY		TRT003
TRT003005	FERRY ROUTE		TRT003
TRT003006	MARSHALLING YARD		TRT003
TRT003007	RAILWAY		TRT003
TRT003008	ROAD		TRT003
TRT003009	ROUNDAABOUT >25M	ROUNDAABOUT GREATER THAN 25 METRES IN DIAMETER AND ALL OTHER ROUNDAABOUTS WHERE SIZE NOT IDENTIFIED	TRT003
TRT003010	SIDING		TRT003
TRT003011	TRAMWAY		TRT003
UTL	UTILITIES INFRASTRUCTURE		
UTL001	CABLEWAY		UTL
UTL001001	CABLEWAY PYLON		UTL001
UTL001002	CABLEWAY TERMINAL		UTL001
UTL001003	CHAIRLIFT	CHAIRLIFT OR CABLECAR	UTL001
UTL001004	POMA TOW		UTL001
UTL001005	T-BAR TOW		UTL001

CODE	NAME	DESCRIPTION	PARENT Code
UTL002	COMMUNICATION CABLE		UTL
UTL002001	FIBER OPTIC ABOVEGROUND		UTL002
UTL002002	FIBER OPTIC BELOWGROUND		UTL002
UTL002003	FIBER OPTIC SUBMARINE		UTL002
UTL003	COMMUNICATION SERVICE		UTL
UTL003001	BROADCAST RADIO FACILITY		UTL003
UTL003002	BROADCAST TELEVISION FACILITY		UTL003
UTL003003	EMERGENCY TELEPHONE		UTL003
UTL003004	EXCHANGE		UTL003
UTL003005	MOBILE TELEPHONY FACILITY		UTL003
UTL003006	PUBLIC TELEPHONE		UTL003
UTL003007	RADIO COMMUNICATION FACILITY		UTL003
UTL003008	RADIO STATION		UTL003
UTL003009	TELEVISION STATION		UTL003
UTL003010	WIRELESS DATA FACILITY		UTL003
UTL004	OFFSHORE CONSTRUCTION		UTL
UTL004001	GAS PLATFORM		UTL004
UTL004002	GASOIL PLATFORM		UTL004
UTL004003	OIL PLATFORM		UTL004
UTL005	PIPELINE		UTL
UTL005003	GAS ABOVEGROUND		UTL005
UTL005004	GAS BELOWGROUND		UTL005
UTL005005	OIL ABOVEGROUND		UTL005
UTL005006	OIL BELOWGROUND		UTL005

CODE	NAME	DESCRIPTION	PARENT Code
UTL005007	SEWER ABOVEGROUND		UTL005
UTL005008	SEWER BELOWGROUND		UTL005
UTL006	PIPELINE FACILITY		UTL
UTL006001	OUTLET TOWER		UTL006
UTL006002	PUMPING STATION		UTL006
UTL006003	SEWAGE TREATMENT PLANT		UTL006
UTL006004	VALVE STATION		UTL006
UTL006005	WATER TREATMENT	WATER TREATMENT OR FILTRATION	UTL006
UTL007	POWER FACILITY		UTL
UTL007001	COOLING TOWER		UTL007
UTL007002	POWER STATION		UTL007
UTL007002001	FOSSIL FUEL DRIVEN POWER STATION		UTL007002
UTL007002002	GAS TURBINE/FACILITY		UTL007002
UTL007002003	GEO THERMAL POWER STATION		UTL007002
UTL007002004	HYDRO POWER STATION		UTL007002
UTL007002005	SOLAR POWER STATION		UTL007002
UTL007002006	WIND TURBINE/FACILITY		UTL007002
UTL007003	SUB STATION		UTL007
UTL007004	TERMINAL STATION		UTL007
UTL008	POWER LINE		UTL
UTL008001	DISTRIBUTION LINE		UTL008
UTL008002	POWER LINE PYLON		UTL008
UTL008003	SUB TRANSMISSION LINE		UTL008
UTL008004	SUBMARINE CABLE		UTL008

CODE	NAME	DESCRIPTION	PARENT Code
UTL008005	TRANSMISSION LINE		UTL008
UTL009002	PLUG ON PIPELINE		UTL009

Table 5: FEATURE_ADDRESS_SITE

Name	Data Type	Description	Prim Key	Man	F K TABLE	F K Col	10 Char Alias
FEATURE_ADDRESS_PID	varchar2(15)	The Persistent Identifier is unique to the real world feature this record represents.	Y	Y	-	-	FT_ADD_PID
FEATURE_PID	varchar2(15)	The Persistent Identifier for the feature.	N	Y	FEATURE	FEATURE_PID	FEAT_PID
ADDRESS_SITE_PID	varchar2(15)	The address site persistent identifier. <i>The foreign key table is NOT SUPPLIED.</i>	N		ADDRESS_SITE	ADDRESS_SITE_PID	ADD_SI_PID
DATE_CREATED	Date	Date this record was created.	N	Y	-	-	DT_CREATE
DATE_RETIRED	Date	Date this record was retired.	N	N	-	-	DT_RETIRE

Table 6: FEATURE_ALIAS

Name	Data Type	Description	Prim Key	Man	F K TABLE	F K Col	10 Char Alias
FEATURE_ALIAS_PID	varchar2(15)	The Persistent Identifier is unique to the real world feature this record represents.	Y	Y	-	-	FT_ALI_PID
FEATURE_PID	varchar2(15)	The persistent identifier for the feature.	N	Y	FEATURE	FEATURE_PID	FEAT_PID
DATE_CREATED	date	Date this record was created.	N	Y	-	-	DT_CREATE
DATE_RETIRED	date	Date this record was retired.	N	N	-	-	DT_RETIRE
FEATURE_ALIAS_NAME	varchar2(200)	The feature alias name.	N	Y	-	-	FEAT_AL_NA
FEATURE_ALIAS_TYPE_CODE	varchar2(15)	The feature alias type code.	N	Y	-	-	FT_ALTY_CD

Table 7: FEATURE_ALIAS_TYPE_AUT

Name	Data Type	Description	Prim Key	Man	F K TABLE	F K Col	10 Char Alias
CODE	varchar2(15)	The Persistent Identifier is unique to the real world feature this record represents.	Y	Y	-	-	CODE
NAME	varchar2(50)	User-friendly name for the feature alias type code represents.	N	N	-	-	NAME
DESCRIPTION	varchar2(500)	User-friendly description for the feature alias type code represents.	N	N	-	-	DESCPN

Table 8: FEATURE_ALIAS_TYPE_AUT Codes

CODE	NAME	DESCRIPTION
A	Alternative	Alternative name

Table 9: FEATURE_PARENT_CHILD

Name	Data Type	Description	Prim Key	Man	F K TABLE	F K Col	10 Char Alias
FEATURE_PARENT_CHILD_PID	varchar2(15)	The Persistent Identifier is unique to the real world feature this record represents.	Y	Y	FEATURE	-	FT_PC_PID
CHILD_FEATURE_PID	varchar2(15)	The feature persistent identifier representing the child.	N	Y	FEATURE	FEATURE_PID	CHD_FT_PID
PARENT_FEATURE_PID	varchar2(15)	The feature persistent identifier representing the parent.	N	Y	FEATURE	FEATURE_PID	PNT_FT_PID
PARENT_CHILD_JOIN_TYPE	varchar2(10)	The feature parent child relationship type.	N	N	-	-	PARENT_CHI
DATE_CREATED	date	Date this record was created.	N	Y	-	-	DT_CREATE
DATE_RETIRED	date	Date this record was retired.	N	N	-	-	DT_RETIRE

Table 10: FEATURE_STATUS_AUT

Name	Data Type	Description	Prim Key	Man	F K TABLE	F K Col	10 Char Alias
CODE	varchar2(15)	The Persistent Identifier is unique to the real world feature this record represents.	Y	Y	-	-	CODE
NAME	varchar2(50)	User-friendly name for the feature status code represents.	N	N	-	-	NAME
DESCRIPTION	varchar2(200)	User-friendly description for the feature status code represents.	N	N	-	-	DSCPN

Table 11: FEATURE_STATUS_AUT Codes

CODE	NAME	DESCRIPTION
CURRENT	CURRENT	A current feature
GEOABA	ABANDONED	An approved official geographical name that was abandoned due to objections.
GEOASS	ASSIGNED	Geographical name officially assigned to feature.
GEOBAS	BASE	This is a lifetime name for a feature, if the recorded name is subject to limited-term private contracts.
GEODIS	DISCONTINUED	Geographical name that has been officially discontinued.
GEODUA	DUAL ASSIGNED	Geographical name officially assigned to both names of a dual named feature.
GEODUO	DUAL	This type consists of one name comprised of one Indigenous and one non-Indigenous name, which must be used together as the registered legally recognised name for the feature.
GEODUU	DUAL UNASSIGNED	Geographical name not yet officially assigned to both names of a dual named feature.
GEOHIS	HISTORICAL	This is a name that is no longer in official use but is recorded for information purposes.
GEOINT	INTERIM	This is a name that is no longer in official use but is recorded for information purposes.
GEOPRC	PROPOSED CHANGE	This is a proposed new name for an already named feature, locality or road, which has not yet been approved by the Registrar.

CODE	NAME	DESCRIPTION
GEOPRN	PROPOSED NEW	This is a new name for a feature, locality or road, which is proposed but has not yet been approved by the Registrar.
GEOREC	RECORDED	Feature with name that is available with official data but has not been assigned as a geographical name.
GEOREC	RECORDED	This is the name of a feature if a private entity has naming rights.
GEOREG	REGISTERED	This type is legally recognised for the purposes of the Act as an official name for a feature, locality or road administered or coordinated by a government authority.
GEOTRA	TRADITIONAL	This is a traditional Indigenous Australian name, which is not in official use for a feature.
GEOUNA	UNASSIGNED	Geographical name not yet officially assigned to a feature. This includes proposed, deferred and approved names that have not yet been finalised.
GEOUNO	UNOFFICIAL	Feature that is an unofficial (sometimes formally discontinued) geographical name.
GEOWDN	WITHDRAWN	A proposed official geographical name that was withdrawn.

Table 12: FEATURE_POINT

Name	Data Type	Description	Prim Key	Man	F K TABLE	F K Col	10 Char Alias
FEATURE_POINT_PID	varchar2(15)	The Persistent Identifier is unique to the real world feature this record represents.	Y	Y	-	-	FT_PT_PID
FEATURE_PID	varchar2(15)	The persistent identifier for the feature.	N	Y	FEATURE	FEATURE_PID	FEAT_PID
DATE_CREATED	date	Date this record was created.	N	Y	-	-	DT_CREATE
DATE_RETIRED	date	Date this record was retired.	N	N	-	-	DT_RETIRE
GEOMETRY	point	The POINT geometry.	N	Y	-	-	GEOMETRY
PROCESS_TYPE_CODE	varchar2(15)	Code for type of data processing undertaken.	N	Y	-	-	PRC_TYP_CD

Table 13: FEATURE_LINE

Name	Data Type	Description	Prim Key	Man	F K TABLE	F K Col	10 Char Alias
FEATURE_LINE_PID	varchar2(15)	The Persistent Identifier is unique to the real world feature this record represents.	Y	Y	-	-	FT_LNE_PID
FEATURE_PID	varchar2(15)	The persistent identifier for the feature.	N	Y	FEATURE	FEATURE_PID	FEAT_PID
DATE_CREATED	date	Date this record was created.	N	Y	-	-	DT_CREATE
DATE_RETIRED	date	Date this record was retired.	N	N	-	-	DT_RETIRE
GEOMETRY	line	The Line geometry.	N	Y	-	-	GEOMETRY
PROCESS_TYPE_CODE	varchar2(15)	Code for type of data processing undertaken.	N	Y	-	-	PRC_TYP_CD

Table 14: FEATURE_POLYGON

Name	Data Type	Description	Prim Key	Man	F K TABLE	F K Col	10 Char Alias
FEATURE_POLYGON_PID	varchar2(15)	The Persistent Identifier is unique to the real world feature this record represents.	Y	Y	-	-	FT_PLY_PID
FEATURE_PID	varchar2(15)	The persistent identifier for the feature.	N	Y	FEATURE	FEATURE_PID	FEAT_PID
DATE_CREATED	date	Date this record was created.	N	Y	-	-	DT_CREATE
DATE_RETIRED	date	Date this record was retired.	N	N	-	-	DT_RETIRE
GEOMETRY	MDSYS.SDO_GEOMETRY	The Polygon geometry.	N	Y	-	-	GEOMETRY
PROCESS_TYPE_CODE	varchar2(15)	Code for type of data processing undertaken.	N	Y	-	-	PRC_TYP_CD

Table 15: FEATURE_PROCESS_TYPE_AUT

Name	Data Type	Description	Prim Key	Man	F K TABLE	F K Col	10 Char Alias
CODE	varchar2(15)	The Persistent Identifier is unique to the real world feature this record represents.	Y	Y	-	-	CODE
NAME	varchar2(50)	User-friendly name for the feature process type code represents.	N	N	-	-	NAME
DESCRIPTION	varchar2(200)	User-friendly description for the feature process code represents.	N	N	-	-	DSCRPN

Table 16: FEATURE_PROCESS_TYPE_AUT Codes

CODE	NAME	DESCRIPTION
ADDAPPROX	Approximation	Geocoding address gave an approximation of the location as a point at either street intersection, street locality or locality
ADDGNAF	GNAF match	Geocoding address gave a match to GNAF address
NO	No processing	No processing was undertaken due to geometry being supplied by contributor

Table 17: Hierarchical Features of Interest Levels Table

The Feature Category AUT codes can be displayed in a hierarchical table shown below. The Parent Feature category Codes can be found in the cells to the left of the selected cell. For example, a State Government Office (BDG001001002) and a Local Government Office (BDG001001003), both have a Government Office parent (BDG001001).

The Government Offices (BDG001001) all have an Administration Facility parent (BDG001). The Administration Facilities (BDG001) all have a Building parent (BDG).

Entity	Level 1	Level 2	Level 3	Level 4
PARLIAMENT HOUSE CANBERRA	BDG Building	BDG001 Administration Facility	BDG001001 Government Office	BDG001001001 Australian Government Office
VICTORIAN STATE PARLIAMENT HOUSE	BDG Building	BDG001 Administration Facility	BDG001001 Government Office	BDG001001002 State Government Office
BRISBANE CITY COUNCIL CHAMBERS	BDG Building	BDG001 Administration Facility	BDG001001 Government Office	BDG001001003 Local Government Office